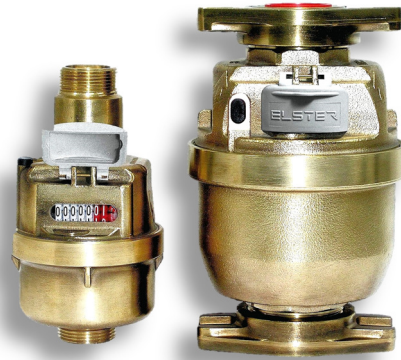


V100

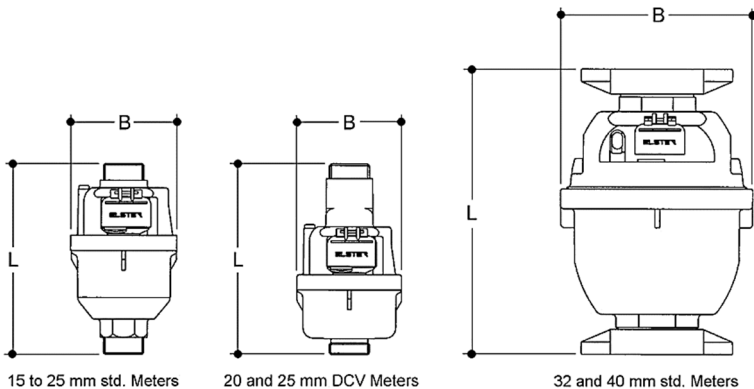
Product Specification



V100 PERFORMANCE TO NMI R49-1 / CLASS 2

NOMINAL METER DIAMETER (DN MM) - (STD Q ₃ /Q ₁ RATIO)			15 - (200) ^②	20 - (200)	25 - (315)	32 - (250)	40 - (200)
ALTERNATIVE Q ₃ /Q ₁ AVAILABLE RATIOS			250, 315 & 400	250, 315 & 400			
MINIMUM FLOW RATE	Q ₁ ± 5%	l/h	20	20	20	40	80
TRANSITIONAL FLOW RATE	Q ₂ ± 2%	l/h	32	32	32	64	128
PERMANENT FLOW RATE	Q ₃ ± 2%	kL/h	4	4	6.3	10	16
OVERLOAD FLOW RATE	Q ₄ ± 2%	kL/h	5	5	7.875	12.5	20
MINIMUM REGISTRATION FLOW RATE		l/h	3	3	13	22	37
PRESSURE LOSS - STD. METER / WITH DCV		kPa	24.9	24.0/60.4	34.9/60.6	19.7	20.5
@ Q _n FLOW RATES TO AS 3565.1-2010		kL/h	2.5	2.5	3.5	5	7.5
MAXIMUM ADMISSABLE PRESSURE		kPa	1600	1600	1600	1600	1600
MAXIMUM ADMISSIBLE TEMPERATURE		°C	30	30	30	30	30
LIMITING TEMPERATURE		°C	50	50	50	50	50
MINIMUM COUNTER REGISTRATION		litre	0.1 ^①	0.1 ^①	0.1	0.1	0.1
MAXIMUM COUNTER REGISTRATION		kL	99999.999 ^①	99999.999 ^①	99999.999	99999.999	99999.999
PULSE OUTPUT		litre/pulse	5 ^①	5 ^①	5	5	5
NMI PATTERN APPROVAL	Number:		14/3/1	14/3/1	14/3/11	14/3/12	14/3/18
WATERMARK APPROVAL	Number:				WM040243		

- ① Technical data shown is for meters fitted with 5 x 3 number wheel counters.
For meters fitted with 4 x 4 number wheel counters, the data for minimum & maximum registration and pulse output would be 0.01, 9999.9999 and 0.5 respectively.
- ② The 15mm version is also available with a Q₃ of 2.5 and Q₃/Q₁ ratios of 200 and 250.



DIMENSIONS

NOMINAL DIAMETER (DN MM)	UNITS	15	20	25	32	40
OVERALL METER LENGTH (L ± 1mm)	③ mm	133	153	177	189	231
MAXIMUM DIAMETER (B)	mm	87	87	101	121	160
BARE METER WEIGHT	④ kg	1.1	1.25	2.1	3.6	5.7

- ③ Overall lengths other than those shown are also available.
- ④ All weights shown including the 20 and 25mm DCV meters are unpacked without connections and are approximate only.

V100 Product Specification

For more information

www.elstermetering.com

Elster Metering Pty Ltd

Head Office
55 Northcorp Boulevard
Broadmeadows
Victoria 3047
Australia
T: +61 3 9355 2000
E: ElsterVICSales@Honeywell.com

Elster Metering Pty Ltd

14/22 Northumberland Rd Caringbah
New South Wales 2229
Australia
T: +61 2 8536 7400
E: ElsterNSWSales@Honeywell.com

Elster Metering Pty Ltd

19 Corporate Drive
Cannon Hill
Queensland 4170
Australia
T: +61 7 3266 7733
E: ElsterQLDSales@Honeywell.com

Elster Metering Pty Ltd

PO Box 2130
Wangara
Western Australia 6065
Australia
T: +61 8 9206 1499
E: ElsterWASales@Honeywell.com

All rights reserved. The company's policy is one of continuous product improvement and the right is reserved to modify the specifications contained herein without notice. These products have been manufactured with current technology and in accordance with the applicable referenced standards.

Lit Ref: SMLH001 09/19-1
© 2017 Honeywell International Inc.

Honeywell